

# universal spring cylinder

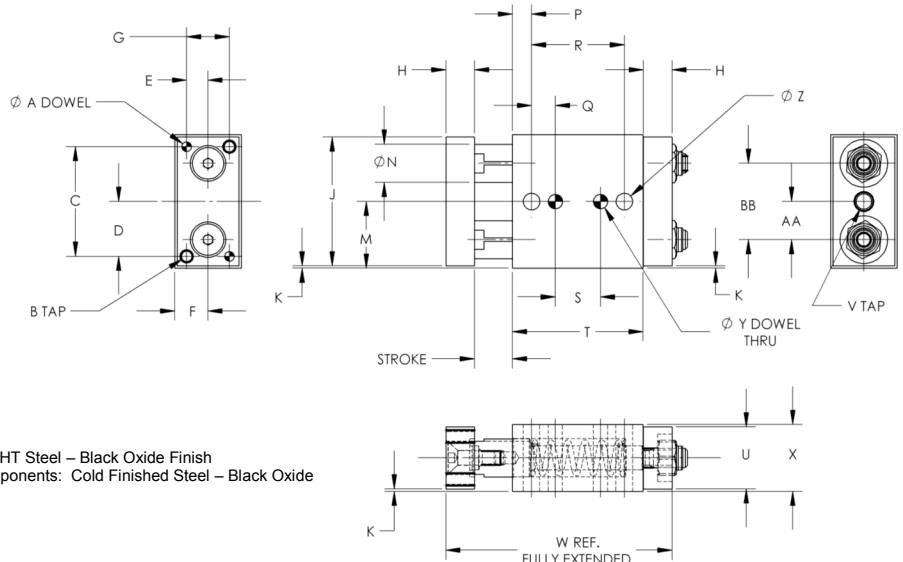
The "Adaptomizable" Spring Plunger.

CAD DOWNLOAD LINKS 

## SPECIFICATIONS

## GUIDED STYLE

SHAFT DIA.		5/16"		1/2"		5/8"		1"	
STROKE		5/16"		1/2"		11/16"		1"	
SPRING FORCE		LT.	HVY.	LT.	HVY.	LT.	HVY.	LT.	HVY.
END FORCE (LBS.)	INITIAL	1.2	3.2	4.2	11.4	4.4	12.0	5.0	13.0
	HALFWAY	2.6	7.3	6.9	18.7	9.8	27.0	15.0	39.0
	FINAL	3.2	11.4	9.6	26.2	15.2	42.2	25.0	65.0
PART NUMBER		C031031-STL1	C031031-STL2	C050050-STL1	C050050-STL2	C063068-STL1	C063068-STL2	C100100-STL1	C100100-STL2
A		Ø 0.1265±.0005		Ø 0.1265±.0005		Ø 0.1895±.0005		Ø 0.2520±.0005	
B		6-32 UNC		8-32 UNC		1/4-20 UNC		5/16-18 UNC	
C		1.125		1.438		2.000		2.625	
D		0.563		0.719		1.000		1.313	
E		0.188		0.281		0.281		0.438	
F		0.313		0.438		0.500		0.750	
G		0.375		0.563		0.563		0.875	
H		0.250		0.375		0.375		0.500	
J		1.313		1.688		2.438		3.188	
K		0.031		0.031		0.031		0.031	
M		0.688		0.875		1.250		1.625	
N		Ø 0.313		Ø 0.500		Ø 0.625		Ø 1.000	
P		0.188		0.250		0.313		0.375	
Q		0.250		0.313		0.375		0.500	
R		0.938		1.219		1.500		2.438	
S		0.438±.0005		0.594±.0005		0.750±.0005		1.438±.0005	
T		1.308		1.714		2.120		3.182	
U		0.563		0.813		0.938		1.438	
V		8-32 UNC		1/4-20 UNC		5/16-18 UNC		3/8-16 UNC	
W		2.125		2.970		3.563		5.188	
X		0.625		0.875		1.000		1.500	
Y		0.1265±.005		Ø 0.1895±.005		Ø 0.2520±.005		Ø 0.3145±.005	
Z		Ø 0.141		Ø 0.219		Ø 0.281		Ø 0.344	
AA		0.375		0.500		0.625		0.750	
BB		0.750		1.000		1.250		1.500	



**Materials**  
 Shafts: 4140 HT Steel – Black Oxide Finish  
 All Other Components: Cold Finished Steel – Black Oxide Finish

**dbm**  
 INNOVATION INC.  
 Post Office Box 482  
 Sussex, WI 53089  
 (262) 246-8075  
 FAX: (262) 246-9075  
 mail@dbminnovation.com  
 www.dbminnovation.com