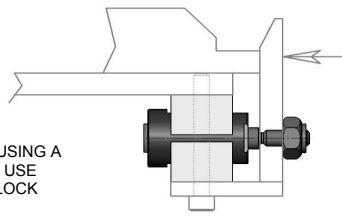
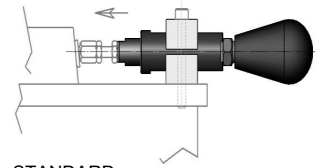


MULTIPLE SPRING-LOADED MECHANICAL STOPS WITH RETRACT LOCKS

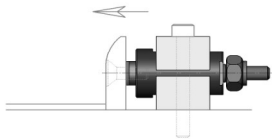
AVOID ROTATION BY USING A PLATE AS SHOWN OR USE OPTIONAL RETRACT LOCK



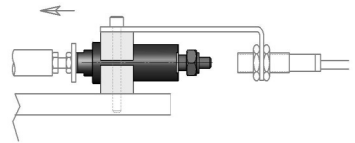
TENSION APPLICATION
HOLD WORKPIECE IN FIXTURE BEFORE AUTOMATIC HYDRAULIC OR PNEUMATIC CLAMPING



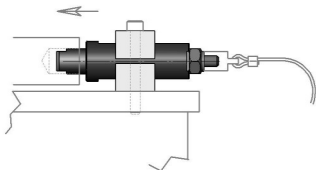
STANDARD SWIVEL PAD



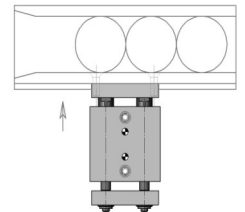
CUSTOM-MADE SPRING STOP WITH SPECIAL MATERIAL



STOP BLOCK WITH PROXIMITY SENSOR



REMOTE CABLE ACTUATED

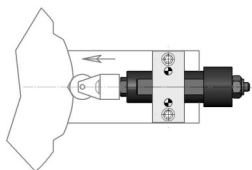


SPRING-LOADED RAIL USING THE GUIDED STYLE

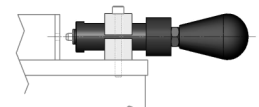
dbm universal spring cylinder

The "Adaptomizable" Spring Plunger.

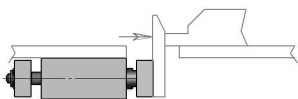
- Saves design and build costs
- Adapts to applications
- Customizable with accessories
- Larger sizes
- Light and heavy spring forces
- Rugged, precision-built



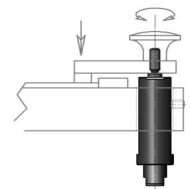
ROLLER DETENT



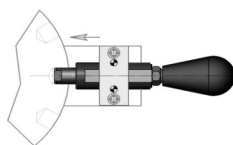
RETRACT LOCK



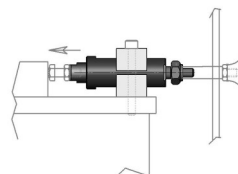
OFFSET FORCE USING THE GUIDED STYLE



ROTATE-AND-HOLD APPLICATION



INDEXING APPLICATION



REMOTE ACTUATION

MADE IN THE USA 

Use alone or with accessories for these applications:

- LOCATING PINS
- CUSHIONING
- REMOTE APPLICATIONS
- HOLDING
- INDEXING
- STOPPING
- SPRING-LOADED LATCHES
- TENSION OR COMPRESSION
- SPRING APPLICATIONS

A new, patented tool has become key to solving the puzzles encountered in machine and fixture design and build. It's the DBM Universal Spring Cylinder—*The "Adaptomizable" Spring Plunger*.

It's the highly adaptable and customizable spring plunger that easily conforms to a variety of applications encountered when designing machinery and fixtures. Designed for customization by attaching accessories at either end, the DBM Universal Spring Cylinder reduces expensive custom design costs. It handles a wide variety of applications that existing spring-loaded devices simply cannot.



Threaded Style



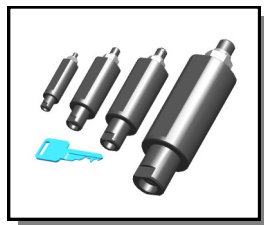
Non-Threaded Style

FEATURES

With a tapped hole and pilot bore on the compression end and a threaded extension on the tension end, it's easy to add standard or custom accessories and create a device that fills a variety of needs—in compression or tension. The hardened steel plunger extends completely through the body providing

a large bearing surface for offset loads. It can also be used directly without accessories (as in indexing applications).

The DBM Universal Spring Cylinder is made with precision tolerances to handle indexing and locating tasks. The cylinder body is available in 3 styles: threaded, non-threaded and guided (twin plungers). Each style is available in four sizes and two spring forces. Use the threaded style for ease of mounting. In the non-threaded style, the inaccuracies inherent with thread runout are avoided because the cylinder body has an accurate outside diameter. This is especially useful for spring-loaded-pin locating applications. The guided style is designed with twin plungers to prevent rotation and accommodate offset loads. It has a tooling plate for mounting accessories.



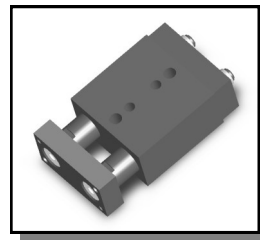
Non-Threaded Style
Size Comparison

An optional retract lock is available for the threaded and non-threaded styles. Completely retracting the plunger and rotating it 90 degrees will hold the plunger in position. The removable retract lock is designed to attach to the spring plunger's threaded extension.

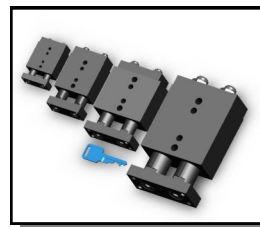
We provide a number of options for mounting the DBM Universal Spring Cylinder. Plus, we offer numerous accessories for both ends. Choose the mounting option and accessories for your application, and experience the time- and cost-saving benefits of *The "Adaptomizable" Spring Plunger*.

Additional sizes, materials and accessories are currently under development. Special designs and spring forces can be supplied as well. Call or send specifications for a prompt quotation.

Thank you for your interest in the DBM Universal Spring Cylinder!



Guided Style



Guided Style Size Comparison

dbm
INNOVATION INC.

Designers of Industrial Automation
and Equipment

Post Office Box 482

Sussex, WI 53089

(262) 246-8075

For **downloadable CAD files**,
please visit us at

www.dbminnovation.com/usdc

dbm
universal spring cylinder
The "Adaptomizable" Spring Plunger.

The specifications and data in this publication are believed to be accurate and reliable. However, it is the responsibility of the product user to determine the suitability of DBM Innovation Inc. products for a specific application. While defective products will be replaced without charge if promptly returned, no liability is assumed beyond such replacement. Specifications subject to change without notice.