



# **dbm** universal **spring** cylinder

*The “Adaptomizable” Spring Plunger.*

## TENSION END ACCESSORIES

Standard accessories for use on the tension end (small diameter threaded end) of the dbm universal spring cylinder plunger.

Remove locknut if required and use thread locking compound to secure accessory.



INNOVATION INC.

Post Office Box 482

Sussex, WI 53089

(262) 246-8075

FAX: (262) 246-9075

[mail@dbminnovation.com](mailto:mail@dbminnovation.com)

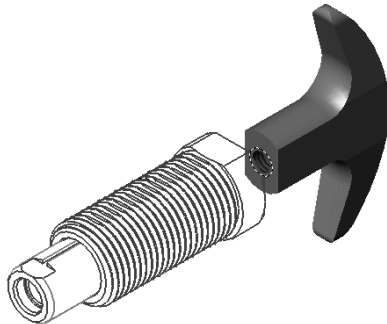
[www.dbminnovation.com](http://www.dbminnovation.com)



# universal spring cylinder

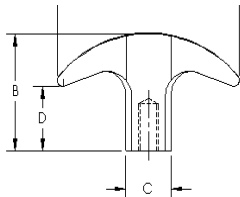
The "Adaptomizable" Spring Plunger.

CAD DOWNLOAD LINKS



## TENSION END ACCESSORIES

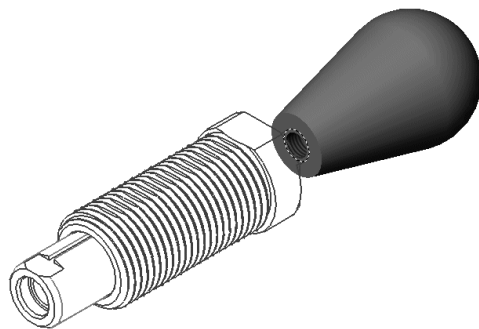
### PLASTIC CURVED T-HANDLE DIMENSIONS FOR THREADED AND NON-THREADED STYLES



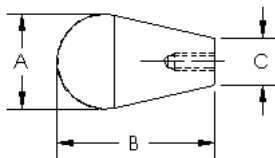
#### PLASTIC CURVED T-HANDLE

Material: Black Phenolic — Brass Insert

PLUNGER DIA.	5/16"	1/2"	5/8"	1"
PART NUMBER		DK-75	DK-76	
A		2.25	2.25	
B		1.25	1.25	
C		.56	.56	
D		.69	.69	
Insert Thread		1/4-20	5/16-18	
Thread Depth		.50	.50	



### PLASTIC TAPERED KNOB DIMENSIONS FOR THREADED AND NON-THREADED STYLES



#### PLASTIC TAPERED KNOB

Material: Black Phenolic — Brass Insert

PLUNGER DIA.	5/16"	1/2"	5/8"	1"
PART NUMBER	BD-0	BD-6	BD-25	BD-35
A	.75	1.00	1.63	1.63
B	1.25	1.63	2.50	2.50
C	.38	.50	.88	0.88
Insert Thread	#6-32	1/4-20	5/16-18	1/2-13
Thread Depth	.31	.44	.44	.63

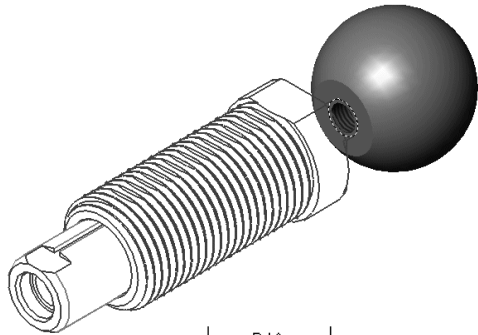
The specifications and data in this publication are believed to be accurate and reliable. It is the responsibility of the product user to determine the suitability of DBM Innovation Inc. products for a specific application. While defective products will be replaced without charge if promptly returned, no liability is assumed beyond such replacement. Specifications subject to change without notice. © DBM Innovation Inc. All rights reserved.



# universal spring cylinder

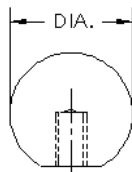
The "Adaptomizable" Spring Plunger.

CAD DOWNLOAD LINKS



## TENSION END ACCESSORIES

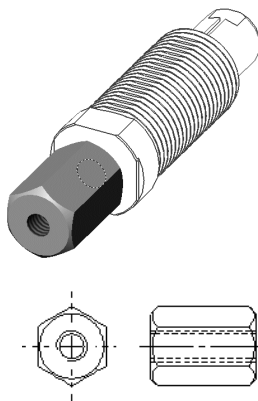
### PLASTIC BALL KNOB DIMENSIONS FOR THREADED AND NON-THREADED STYLES



PLUNGER DIA.	5/16"	1/2"	5/8"	1"
PART NUMBER	B-60	B-3	B-13	B-10
DIA.	.75	1.00	1.38	1.88
Insert Thread	#6-32	1/4-20	5/16-18	1/2-13
Thread Depth	.31	.44	.44	.63

### PLASTIC BALL KNOB

Material: Black Phenolic — Brass Insert



### STEEL COUPLING NUT DIMENSIONS FOR THREADED AND NON-THREADED STYLES.

PLUNGER DIA.	5/16"	1/2"	5/8"	1"
PART NUMBER	91920A454	CN-0	CN-1	CN-3
Thread	#6-32	1/4-20	5/16-18	1/2-13
Overall Length	.31	.88	.88	1.50
Hex Size	.31	.56	.56	.88

### STEEL COUPLING NUT

Material: Cold Finished Steel, Case Hardened — Black Oxide Finish.  
Except 5/16" which is Plain Steel — Zinc Plated Finish.

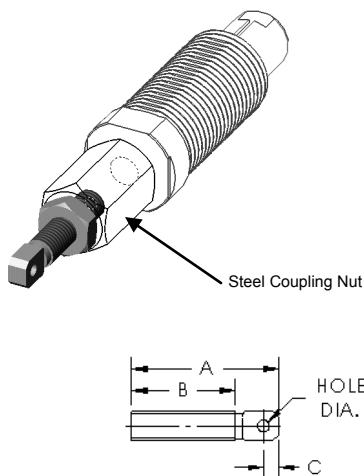


# universal spring cylinder



The "Adaptomizable" Spring Plunger.

CAD DOWNLOAD LINKS 

## TENSION END ACCESSORIES

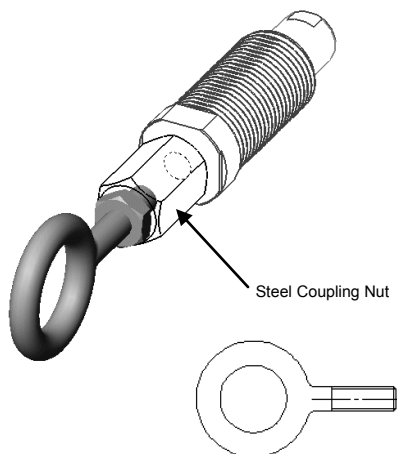


**SPRING ANCHOR DIMENSIONS**  
FOR THREADED AND NON-THREADED STYLES.  
USE WITH STEEL COUPLING NUT.




PLUNGER DIA.	5/16"	1/2"	5/8"	1"
<b>PART NUMBER</b>	CSA-50 	CSA-70 		
Thread	#6-32	1/4-20		
A	.63	1.25		
B	.40	.88		
C	.07	.13		
Hole Size	.05	.10		

### SPRING ANCHOR

Material: C-12114 Steel — Black Oxide Finish



**STEEL EYE BOLT DIMENSIONS**  
FOR THREADED AND NON-THREADED STYLES.  
USE WITH STEEL COUPLING NUT.

PLUNGER DIA.	5/16"	1/2"	5/8"	1"
<b>PART NUMBER</b>		FP-1 	FP-2 	FP-5 
Thread		1/4-20	5/16-18	1/2-13
Shank Length		1.00	1.13	1.50
EYE ID		.75	.88	1.19

### STEEL EYE BOLT

Material: Forged Carbon Steel